

## Mechanical interlock

### Mechanical interlock, AR9

- for contactor frames

9A

12A

18A

22A

32A

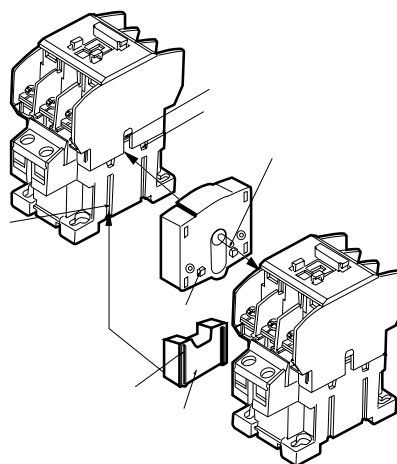
40A

50A

65A

75A

85A



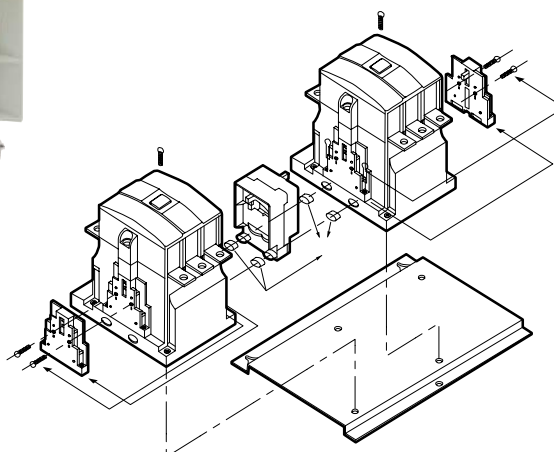
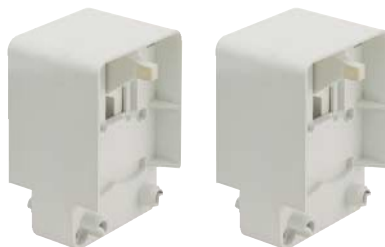
### Mechanical interlock, AR100 and AR180

**AR100:** 100A 125A 150A

**AR180:** 180A 220A 300A 400A

100A 125A 180A 220A 300A 400A

for 4 pole contactor

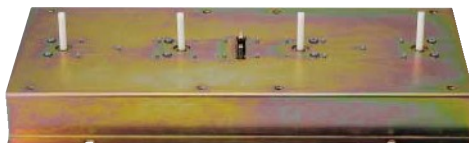


### Mechanical interlock, AR600

- for contactor frames

600A

800A



# Mouser Electronics

Authorized Distributor

Click to View Pricing, Inventory, Delivery & Lifecycle Information:

[Altech:](#)

[AR-9](#)